

\$222,500 - # 55 2204 118 Street Nw, Edmonton

MLS® #E4260787

\$222,500

2 Bedroom, 1.00 Bathroom, 1,045 sqft
Condo / Townhouse on 0 Acres

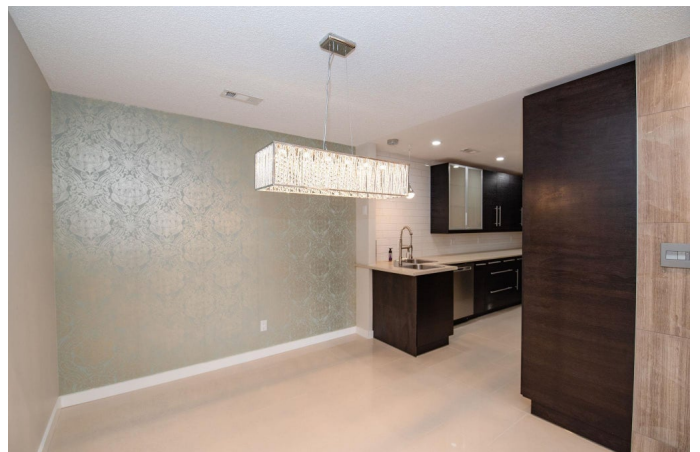
Skyrattler, Edmonton, AB

Welcome to this unbelievably renovated home in the highly desirable neighbourhood of Skyrattler, just steps off of the Blackmud Creek Ravine! The living room features a 2-sided wood burning fireplace with wooden grey marble facade, the perfect place to entertain friends or relax with family! Kitchen is a chef's dream with tons of countertop space, brand new appliances, soft-close cabinetry & more! Adjacent dining room is an excellent size to host all your dinner parties. Primary bedroom is absolutely massive & features large walk-in closet with built-in wood shelving. Good sized secondary bedroom features it's own walk-in closet as well. The bathroom showcases a huge walk-in shower with tile surround, stylish floating vanity & new fixtures. The home is rounded out with frenchdoors leading to the den - your personal office or third bedroom! **ADDITIONAL FEATURES:** New doors to bedrooms/bathroom, dimmable LED pot-lights throughout, large personal storage closet, under-cabinet lighting, in-suite laundry & more!

Built in 1979

Essential Information

MLS® #	E4260787
Price	\$222,500
Bedrooms	2



Bathrooms	1.00
Full Baths	1
Square Footage	1,045
Acres	0.06
Year Built	1979
Type	Condo
Sub-Type	Carriage
Style	Bungalow
Status	ACTIVE

Community Information

Address	# 55 2204 118 Street Nw
Area	Edmonton
Subdivision	Skyrattler
City	Edmonton
County	ALBERTA
Province	AB
Postal Code	T6J 5K2

Amenities

Features	Closet Organizers, Deck, Detectors Smoke, Laundry-In-Suite, Vinyl Windows, See Remarks
Parking	Stall

Interior

Interior	Carpet, Ceramic Tile, Laminate Flooring
Interior Features	Dishwasher-Built-In, Dryer, Microwave Hood Cover, Refrigerator, Stove-Electric, Washer
Heating	Forced Air-1
Bedrooms on Main Level	Y
Basement	None, No Basement
Fireplace	Yes
Fireplaces	Wood, Tile Surround
# of Stories	1

Exterior

Exterior	Vinyl
Exterior Features	Golf Nearby, Landscaped, Park/Reserve, Playground Nearby, Public Transportation, Schools, Shopping Nearby, See Remarks, Ski Hill

Roof	Asphalt Shingles
Construction	Wood Frame
Foundation	Concrete

Additional Information

Condo Fee	\$269
-----------	-------

Listing information last updated on November 28th, 2021 at 1:16pm MST